

TEAM VICAR
of
Foulsham, Guestwick, Stibbard and Wood Norton
in the
Heart of Norfolk Team Ministry



The new Team Ministry

The formation of our new Team Ministry provides creative and challenging opportunities for mission and development in rural ministry.

On 1st September, 2017, the Pastoral Scheme creating both the Heart of Norfolk (HON) Team Ministry and the Reepham and Wensum Valley Team Ministry came into effect. These two Teams form the Deanery of Sparham and make up a formal Anglican Group. Consultation is presently ongoing about a proposal to merge Sparham Deanery with the neighbouring Ingworth Deanery, with the Rector of the Aylsham Team as Rural Dean-designate. (See *maps page 5 and 6.*)

The Pastoral Scheme enabled the creation of the HON ministry team as follows: the Revd Sally Kimmis, Team Rector, based in North Elmham; one full-time Team Vicar (to be appointed)*; one Reader; one retired priest with PTO, willing to provide holiday cover for Sunday duty; and a number of lay people who regularly lead worship and are in the process of becoming Authorised Worship Assistants. A part-time Administrator, based at the Vicarage in North Elmham, began working with us in August 2017.

* The Revd Canon Christopher Davies was licensed as half-time Associate Priest in February 2017 and has agreed to continue for a further two years (to February 2020). This creates an exciting opportunity to appoint a half-time Team Vicar post which could combine with a Diocesan role where the two aspects of ministry are mutually enriching. We believe that being rooted in rural parish ministry would mesh well with the role of Coordinator of Mission Enablers, bringing the rural dimension to the ME Team and offering an environment where Mission initiatives could be contextualised in a parish setting.

It is a very exciting time for a new colleague to join the HON Team, as much is still to be developed and decided.

A collegiate heart is at the centre of the Team Ministry. It is not about one church or one person being at the centre, but how co-operation, community, service and partnership can help us deliver afresh the Good News of Jesus to our different communities.

We aim to pray together, meet together, plan together and lead together.

As a priest of incumbent status, the Team Vicar will have delegated authority for the parishes under his/her care. This will include chairing the relevant Parochial Church Councils; being the usual point of contact for the Pastoral Offices; and being the priest who would normally be more involved in church-led social and fundraising events, Church restoration projects, and other community events and activities. The desire for the clergy to be a 'visible presence' in our communities is strong.

We have already established a 'Strategy Group' for the Team, comprising clergy and lay ministers, representative members of the various PCCs. Although it currently has no legal status, it is a communications forum for planning together; strategic thinking; communicating across the Team; and sharing information, opportunities and concerns.

Primary Pastoral Responsibility

The Team Ministry comprises thirteen parishes, ranging from large village to tiny hamlet. Two of the parishes have been accepted into the Diocese of Norwich Churches Trust (DNCT), which vests the church building into the care of the Trust and removes the responsibilities of the Parochial Church Council.

Within the Team, we are considering the most appropriate grouping of parishes for which the clergy would have primary pastoral responsibility. We have been discussing the possibility of uniting PCCs, drawing gifts and strengths together for the mutual benefit of all. We have also taken steps to unite congregations, creating larger congregations which enhance the experience of worship for all and release some ministry time and energy to explore new initiatives.

The proposed grouping of parishes within the Team is:

Team Rector: North Elmham, Worthing, Billingford and Bintree (DNCT);

Team Vicar: Foulsham, Guestwick, Stibbard and Wood Norton (total population c. 1600);

Associate Priest: Bawdeswell with Foxley, Twyford, Guist and Themelthorpe (DNCT).

Foulsham is served by the Village Stores, the Queen's Head public house and the New Frost Hall, as well as its Community Primary School, which welcomes Church involvement (including Festival services in church). Housing is mixed and there are many young families. There is a bus service to Norwich and Fakenham.

There is a small, but committed, PCC (currently no churchwarden).

Foulsham, Wood Norton and Stibbard churches have all recently had major restoration projects funded through the Heritage Lottery Fund. Once completed, they will have enhanced community facilities ranging from kitchenettes to WCs, improved access and multi-media equipment.

Wood Norton has a modern, well-equipped village hall, situated next to the church. The church enjoys a thriving congregation, a mission-minded PCC and excellent relationship with, and support from, the local community. Our Benefice Reader lives in Wood Norton.

Stibbard is home to All Saints' Church of England VA Primary School, recently federated with North Elmham Church of England VC Primary, with a strong leadership team. Local clergy regularly lead collective worship in the schools; an *Open the Book* team within the Benefice, led by a member of Stibbard Church, has been established since September 2017 and currently leads CW at North Elmham Primary. We would love this ministry to grow!

There is a vibrant worshipping community at Stibbard and a committed, mission-minded PCC.

Guestwick is a small hamlet with a village hall and 'millennium' green (population c135, including a handful of families with young children/teenagers). A small PCC, and smaller congregation, there is a strong commitment to mesh church and community through Festival worship, outings and activities for children and young people.

What can we offer you?

- **Variety** – it is envisaged that the Team Rector, Team Vicar and Associate Priest will lead Sunday worship in the parishes for which they have primary pastoral responsibility, augmented by the lay ministry team. We have everything from large community services, such as the increasingly popular Christingle, to tiny Holy Communion services; from traditional Book of Common Prayer to a willingness to experiment with new styles of worship.
- **Opportunity** – to help form and create a model of ministry for the 21st century, embracing fresh and alternative styles of worship, but also affirming the traditional church. Working with both lay and ordained colleagues (including retired clergy) and being instrumental in the development of discipleship across the Team. We have four Primary Schools in our Team (one VA; one VC; two Community), and our churches play an important role in supporting them all. There is the opportunity to contribute to the 'Vicars' team leading "Thought for the Day" regularly at Reepham High School.
- **Innovation** – the encouragement and support from both lay and ordained colleagues to experiment and innovate with worship and ministry.
- **Collegiality** – ministerial support and not isolation. Our preferred model will be to offer the benefits of leading the communities for which you have primary responsibility but with ministerial, spiritual and practical support of colleagues.
- **Environment** – we enjoy a wonderful quality of life here in the beautiful Norfolk countryside, where people take time to be with each other. We are also within easy reach of an international airport, Norwich, a major regional city, and North Norfolk coast. There is a substantial Rectory in Foulsham.

What might you offer us?

- **Collaborative Style** – we are looking for someone who is a team-player – someone who has a passion for collaborative ministry and who will seek to develop it, recognising and encouraging the involvement of others at all levels within the parishes and Team. Someone who will work to support, train and develop lay involvement.
- **Expertise** - we are looking for someone who will bring further expertise into the Team. Someone who will relish the idea of having a wider responsibility for a particular area of ministry across the Team. This could include, for example: work with children and young people, and their families; lay development; pastoral care.

Accommodation

The Team Vicar will reside in the Rectory at Foulsham, located close to Holy Innocents' Church and the Market Square. Built in the 1980s, it offers spacious and comfortable family accommodation on two floors. It has two reception rooms, a large study (with its own access), kitchen, utility room, five bedrooms and a bathroom. It has oil central heating, a double garage and a large, secluded walled garden.



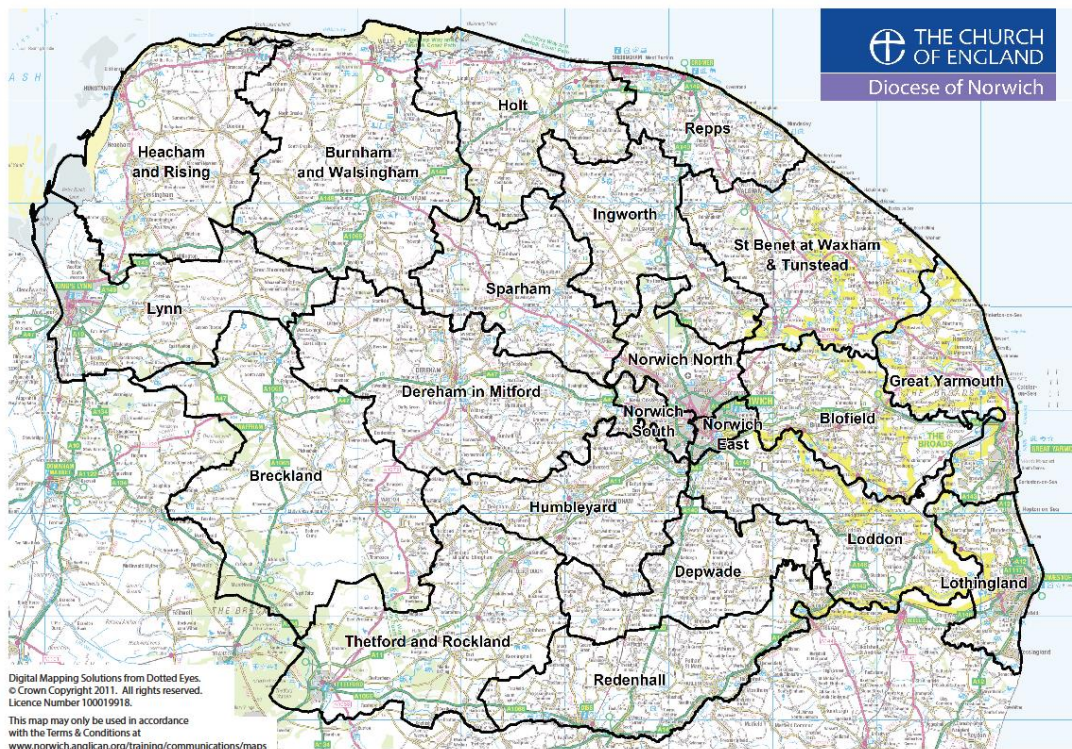
Amenities, Leisure and Recreation

Norfolk is less flat than Noel Coward would have you believe, but is ideal country for walking or cycling. Fine old houses and pretty villages provide many opportunities for exploration, as do more than 650 medieval churches. The County has three very distinct geographical regions: the Broads to the East; Breckland with its heaths and forests in the South West; and a long coastline. Not far from our parishes are the many miles of the North Norfolk coast, maintained by conservation agencies such as the Norfolk Wildlife Trust, the National Trust and RSPB, which provide a rich wildlife habitat, wonderful beaches, and welcome many summer visitors.

Further Information

The Benefice website www.heartofnorfolkchurches.org.uk has details of individual churches, their history and other useful information such as church events, prayer calendar and service plans. The Diocesan website www.dioceseofnorwich.org is an excellent source of Diocesan and national Church news and generally for finding one's way around the Diocese. The Eastern Daily Press is our regional newspaper and is online at <http://www.edp24.co.uk> Trains to London take under two hours and leave every half hour. Local roads take a little getting used to!

MAP showing the Deaneries of the Diocese. Sparham Deanery is central in the northern half of the Diocese to the north-west of Norwich. A map of the Heart of Norfolk benefice is on the next page.



The Heart of Norfolk Team Ministry

MAP OF THE THIRTEEN PARISHES

